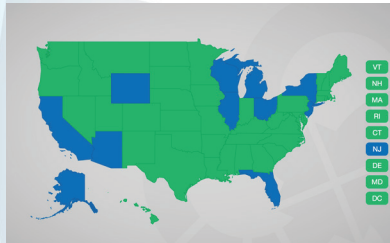


VOL 7 ISSUE 4 SourceLine



What's Your State's UST Requirements?

Source North America invites underground storage tank operators to review our [state-by-state guide to UST regulations](#) as well as an update about [UST containment sump testing procedures](#) in preparation for the Oct. 13, 2018, UST compliance deadline. Despite requests from several industry organizations, the EPA has opted not to postpone the deadline. Some individual states may have options in extending particular aspects of the regulation. For the latest updates, please reference Source's Comprehensive State-by-State Guide.

Find Station Essentials at Source's S³ Website



Source North America's retail website, [Source Simple Solutions \(S³\)](#), features more than 3,000 fueling products. Here customers will find nozzles, hoses, breakaways, filters and other fuel island items ready for immediate shipping. Visit [shop.sourcena.com](#).

Looking Ahead: NACSSHOW2018

Source looks forward to seeing you at the [2018 PEI Convention at the NACS Show](#) Oct. 7-10 in Las Vegas, NV.

Gasoline Blends: Answers to Frequently Asked Questions



When it comes to gasoline, there is quite a bit of variation in the finished fuels that are dispensed across the country. In this FAQ, we widen the discussion beyond octane to explain the many nuances of gasoline blends. (*See related story for a glossary of key terms and definitions.*)

Q: What differentiates the primary gasoline blends that are distributed in the United States?

A: There are three primary types of gasoline blends in the U.S.: summer blends, winter blends and Reformulated Gasoline (RFG). Summer blend-fuels are required by the U.S. Environmental Protection Agency in certain areas to reduce ozone formation from June 1 to Sept. 15. RFG is required *year-round* in areas where more stringent ozone regulations are mandated. The emissions standards for RFG are stricter than the standards for the summer blends, and as such, RFG areas are not allowed to use summer blends. In the wintertime, refiners add oxygenates to gasoline that improve combustion efficiency during cold weather.

Q: How do environmental regulations influence the gasoline blends sold in different areas?

A: The Clean Air Act requires state air agencies to take steps to control ozone pollution in areas that are not meeting the EPA's National Ambient Air Quality Standards (*see related story about ozone standards.*). States may approach this two ways: they may mandate RFG or impose lower Reid Vapor Pressure (RVP) requirements for conventional summer blends of gasoline.

Q: What are fuel volatility and RVP?

A: RVP is a measure of fuel volatility, or fuel's ability to vaporize. The U.S. EPA sets regulations that limit gasoline's RVP during the summer months to prevent excessive evaporation of volatile organic compounds (VOCs), which contribute to the formation of smog. Reference the EPA's [state-by-state table of RVP summer standards](#) for more info.

For more information about gasoline blends, watch [Fuels Market News](#) for Source's latest article.



Plate Recognition for Faster Fueling?

Z Energy, a New Zealand fuel retailer, is providing a faster fueling experience through license plate recognition.

Here's how it works: Customers download an app and register for the service by entering their plate information, purchase preferences and payment information. When customers pull into dedicated "Fastlanes," cameras read and validate the plate number against a secure database of customer information. The system recalls preferred fuel types and automatically facilitates payment for the transaction.

Pretty cool or pretty scary?

Read more about fueling in Z Energy's Fastlane in this [Petrol Plaza article](#).



Regulatory & Policy Roundup

- The EPA completed [designations for the 2015 ozone standards](#).
- The EPA proposed new [renewable fuel volumes](#).
- The [EPA approved isobutanol](#) as a fuel additive for blending into gasoline at levels up to 16 volume percent.
- Congress approved a \$92 million budget for the Leaking Underground Storage Tank (LUST) fund, which matches the previous funding level.
- The EPA and Transportation Department released a [proposed rule to change the Corporate Average Fuel Economy Standards](#).

Gasoline Blends: Terms & Definitions

Conventional Gasoline: Finished motor gasoline not included in the oxygenated or reformulated gasoline categories.

Finished Motor Gasoline: A complex mixture of relatively volatile hydrocarbons with or without additives, blended for use in spark-ignition engines.

Oxygenated Gasoline (Including Gasohol): Includes all finished motor gasoline, other than reformulated gasoline, having oxygen content of 2.0 percent or higher by weight.

Reformulated Gasoline (RFG): A finished gasoline, the composition of which meets the requirements of the reformulated gasoline regulations promulgated by the Clean Air Act.

Fuel Industry Networking – Putt, Shoot, Score!

For several years now, Source North America has looked forward to July for at least two reasons: the [Illinois Petroleum Marketers Association/ Illinois Association of C-Stores \(IPMA-IACS\)](#) and the [Oregon Fuels Association \(OFA\)](#) each hold events that pair recreation with networking.

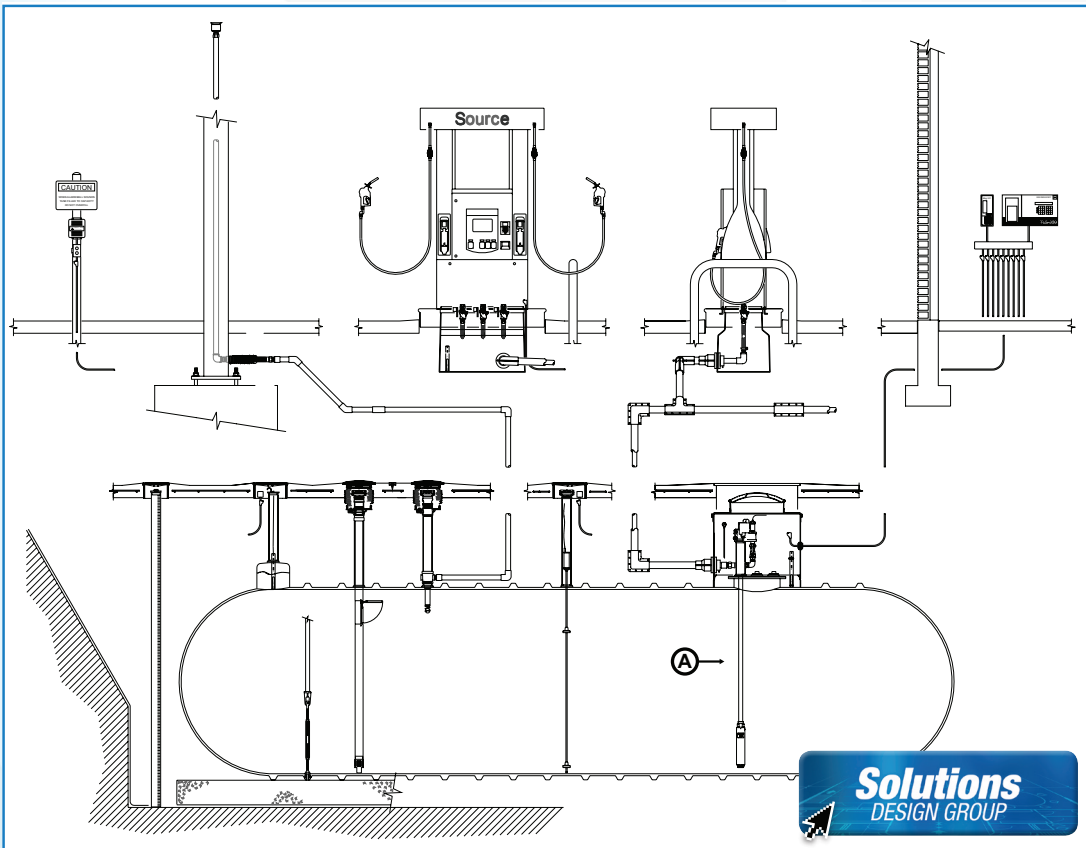
On July 11, Source participated in the IPMA/IACS 67th annual golf outing and 23rd annual clay shoot held in central Illinois. Source was proud to be one of 12 grand sponsors for this event.

Additionally, Source North America and friends (Containment Solutions, OPW, Gilbarco Veeder-Root, Franklin Fueling Systems and Husky) sponsored the welcome dinner that was held in conjunction with the OFA's annual conference association's July 22-24 in Redmond, OR. The conference included educational sessions, a golf tournament and trap shooting.

PICTURED: The OFA Welcome Dinner. In IPMA Clay Shoot foursome: Source's Joe Palazzo, Jim Gaszynski, Jeff Dzierzanowski and Mike Palazzo.



Equipment Guide: What's New with Submersible Turbine Pumps?



Pictured in the Diagram:

A. A submersible pump draws fuel from inside the storage tank, pushes it through the piping to the dispenser for fueling.

What submersible pumps do:

Submersible Turbine Pumps (STPs) transfer fuel from aboveground or underground storage tanks to dispensers by pushing the fuel under pressure through the piping system to the dispensers.

What's new with STPs: Today's submersible pumps are constructed with stainless steel and other materials that resist corrosion. These modifications make the pumps compatible with a wide range of current fuels and they increase the likelihood the pumps will be compatible with future fuels. Due to the higher quality construction materials used, the price of submersible pumps has increased. Choosing a pump that will provide return on investment through long-term, reliable operation is important. Also, the 2 Horsepower pump has grown more popular.

Source solutions: Source is proud to offer the [FE Petro™ Advanced Protection STPs](#) and [Red Jacket Red Armor STPs](#). Call (800) 572-5578 to order a submersible pump.