

VOL 5 ISSUE 6

SourceLine



Source would like to extend our warmest holiday wishes to all of our customers, vendor partners, business associates, friends and their families. Have a happy and safe holiday season!



Source Trailer Program Saves Time & Money

Source's Warehouse on Wheels Trailer Program brings all of the equipment contractors need to a retail fuel construction site. [Watch this video](#) to learn how this unique program reduces costs and saves time on the job site.



Deadlines for Stage II Decommissioning

Several states have deadlines in December 2016 or early January 2017 for meeting Stage II decommissioning requirements. Reference Source's [Stage II Decommissioning Guide](#) for a state-by-state listing of Stage II Decommissioning requirements and deadlines.



Preparing for The Age of Autonomous Driving

How Will Fueling Be Affected?

Since a [self-driving tractor-trailer](#) completed a 120-mile interstate trip in Colorado, conjecture about the widespread adoption of driverless vehicles has shifted into overdrive. In addition, the Department of Transportation and the National Highway Traffic Safety Administration recently released the [Federal Automated Vehicles Policy](#).

For your consideration, here are some scenarios in which driverless vehicles may impact forecourt operations.

Return of Full Service: We may see a whole new business model develop where the makers of driverless vehicle technologies contract with retail fuel operations to provide attendants for fueling.

Concierge Fueling: Volvo recently partnered with an on-demand fuel-delivery company to bring fuel to its customers. It is likely we will see increased collaboration between driverless car manufacturers and third-party fuel operations.

Centralized Fueling: Rather than stopping at whichever retail fuel station that a motorist chooses, the motorist may be directed to centralized commercial fueling hubs, similar to those for bus fleets.

Increased Consumption: Driverless vehicles could enable people who are challenged by driving limitations to travel much more independently. In addition, the extra leisure time that self-driving brings to time-taxed commuters may encourage increased travel.

For more insights about the impact that driverless vehicles could have on the fuel industry, watch [Fuel Marketer News](#) for Source's next "Fueled for Thought" column.

Visa and MasterCard Delay EMV Deadline



Visa and MasterCard have postponed the EMV liability shift for automated fuel dispensers (AFDs) in the United States from October 2017 to October 2020.

The new deadline signals recognition by the card companies that meeting the original deadline would have been unreasonably challenging for fuel marketers. The extension will provide retailers some breathing room for completing equipment upgrades amid supply chain constraints and for obtaining the necessary certifications.

The experts at Source North America have been helping fuel sites across the country complete EMV upgrades. [Click here](#) to learn more about how the AFD EMV delay will affect fuel retailers, or [contact us](#) today to request EMV consulting and implementation services.



EPA Issues Final 2017 RFS Volumes

The U.S. Environmental Protection Agency raised the total amount of biofuels required for blending into gasoline and diesel from 18.11 billion gallons in 2016 to 19.28 billion gallons for 2017. The 2018 biodiesel volume is 2.1 billion gallons (up from 2 billion gallons). [Click here](#) to learn more.



Many New Products Featured at PEI

Many of Source's partners exhibited new products at this year's PEI convention. Here is a selection of some of the new fueling solutions presented at PEI in Atlanta:

- FibreTite Multi-Port Containment System from [OPW](#)
- FlexPay IV and Reimage Kit Bundle from [Gilbarco](#)
- Forecourt Guide from [Franklin Fueling Systems](#)
- Model 303 "Shorty" Offset from [Universal Valve Co.](#)
- Rigid Entry Fitting from [Bravo](#)
- Split Sump Entry Fittings from [NOV/Fiber Glass Systems](#)

Source Has Strong Showing at PEI in Atlanta

Source welcomed many visitors to Booth 4605 at the PEI Convention in Atlanta in October! EMV (see related story on Page 1), mobile payments, alternative fuels and data warehousing were among the issues that were top-of-mind for convention-goers. Source looks forward to helping our friends in the fuel industry with these issues and more at the 2017 PEI Convention in Chicago!

Recommended Practices Update
 The [Petroleum Equipment Institute](#) Tank Installation Committee met prior to PEI to review public comments to the 2011 edition of PEI's Recommended Practices for Installation of Underground Liquid Storage Systems. PEI expects to release a revised edition of PEI/RP100 in February of 2017.

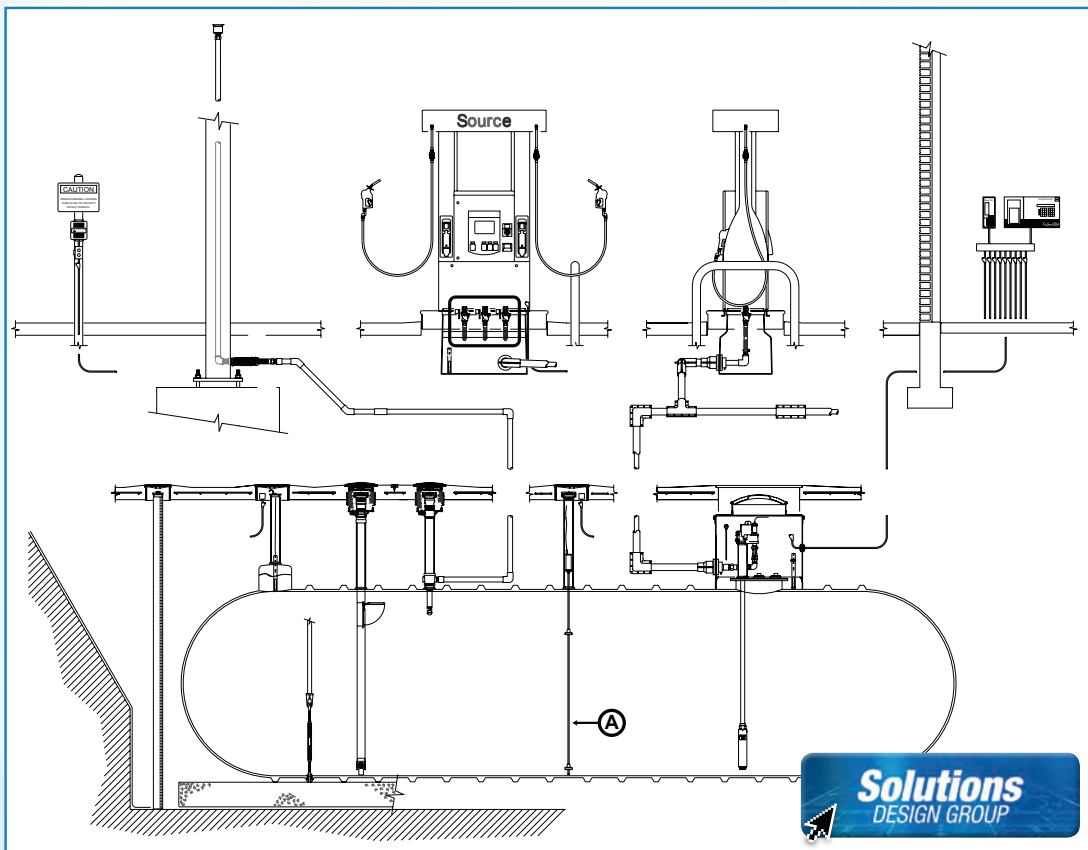
Listen and Learn

Several interviews from the 2016 NACS Show are available on NACS's [Convenience Matters podcasts](#). Topics include "Fueling Sales," which offers insights on what it takes to be a successful fuel retailer, "Instant Party," which discusses the impact music plays on sales, and more.



The Source team exhibited Source's unique services and solutions at the PEI Convention in Atlanta.

Equipment Guide: Magnetostrictive Probes Collect Critical Fuel Data



Pictured in the Diagram:

- A. Magnetostrictive probes measure fuel, provide temperature readings and detect water in fuel tanks to provide operators data about inventory levels and fuel quality.

What magnetostrictive probes do: Magnetostrictive probes, also known as mag probes, measure fuel, provide temperature readings and detect water in the tank to offer operators data about inventory levels and fuel quality.

How magnetostrictive probes work: Part of a fuel system's tank-monitoring system, mag probes utilize a combination of floats along with temperature-sensing elements on the probe to provide fuel site operators with critical information about inventory levels, product temperatures and potential leaks. The data is collected in the fuel site's tank gauge. There are probe configurations available for different types of fuel and in many lengths.

Source solutions: Source is proud to offer magnetostrictive probes from INCON (Franklin Fueling Systems), OMNTEC, OPW Fuel Management Systems, Pneumerca and Veeder-Root. For assistance selecting the proper magnetostrictive probe for your application, please call (800) 572-5578.